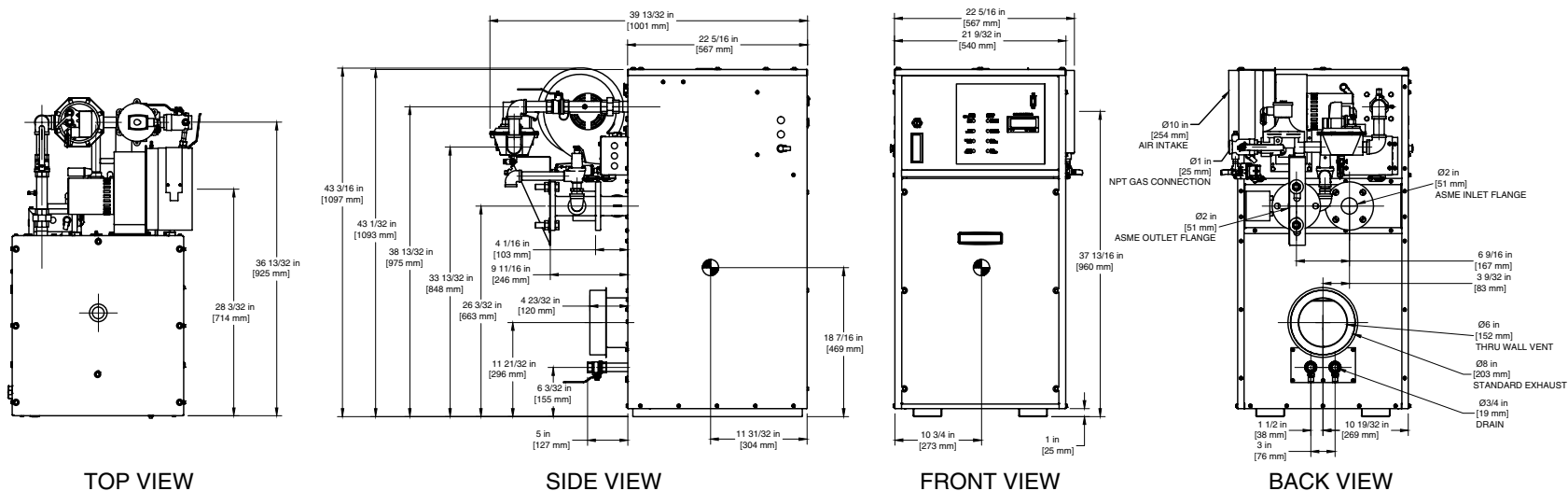


INDOOR UNIT

RSUB-64 REV D



- Notes:
- 1. Dimensions are approximate and should not be used to "rough-in" equipment.
 - 2. Dimensions are subject to change without notice.

BOILER CERTIFIED RATINGS & CAPACITIES

Fuel Type	Natural/Propane Gas	Boiler FLA	5.3*
Input BTU/hr.	500,000 / 147 kW	Min. Gas Pressure Required	5"W.C.**
Output BTU/hr.	425,000 / 125 kW	Max. Gas Pressure Allowed	14"W.C.
Electrical Requirements	120 VAC / 1 ph / 60 hz	Operating Weight	422 lbs. / 192 kg.

BOILER TEMPERATURE RISE / PRESSURE DROP

20°F / 11.1°C				25°F / 13.9°C			
Flow Rate		Pressure Drop		Flow Rate		Pressure Drop	
GPM	L/s	Ft	kPa	GPM	L/s	Ft	kPa
42.5	2.7	0.53	1.5	34.0	2.1	0.35	1.0

BOILER / WATER HEATER TRIM & CONTROLS

Main Gas Valve	V4944B	Main Ball Valve	1"
Firing Valve	1"	Pilot Regulator	White-Rodgers 25M
Safety Valve	ASCO L8214G 1"	Air Switch	HUBA
Ignition Control	Honeywell RM7897C	Blower Motor	Fasco 1/4 hp - FLA 3.6
Operating Control (FB/FW)	Jumo	Relief Valve - FB	3/4" x 3/4" set @ 50 psi
High Limit	Honeywell L4008E	Relief Valve - FW	3/4" x 3/4" set @ 125 psi
		Flow Switch	TACO

WATER HEATER HOURLY RECOVERY CAPACITY (GPH & LPH)

40°F	22°C	60°F	33°C	80°F	44°C	100°F	56°C	120°F	67°C	140°F	78°C
1224	4629	816	3086	612	2314	490	1851	408	1543	350	1322

Boilers & Water Heaters not available for sale in Canada due to NRCan regulations.

A.S.M.E.

ASME Sect IV Htg Surface	69.51 Sq. Ft. / 6.46 Sq. M.	Design Data	Max. 160 psig & 250°F
Water Volume	3.4 gal / 12.9 Liters		

- * Add circulator amps.
- ** For incoming gas pressures lower than 5" W.C. natural or 11" W.C. propane, consult factory.

REP FIRM _____

SUBMITTED BY _____

JOB NAME _____

ARCHITECT _____

ENGINEER _____

CONTRACTOR _____

DATE _____

FUTERA II 500

Category I or Category III Appliance

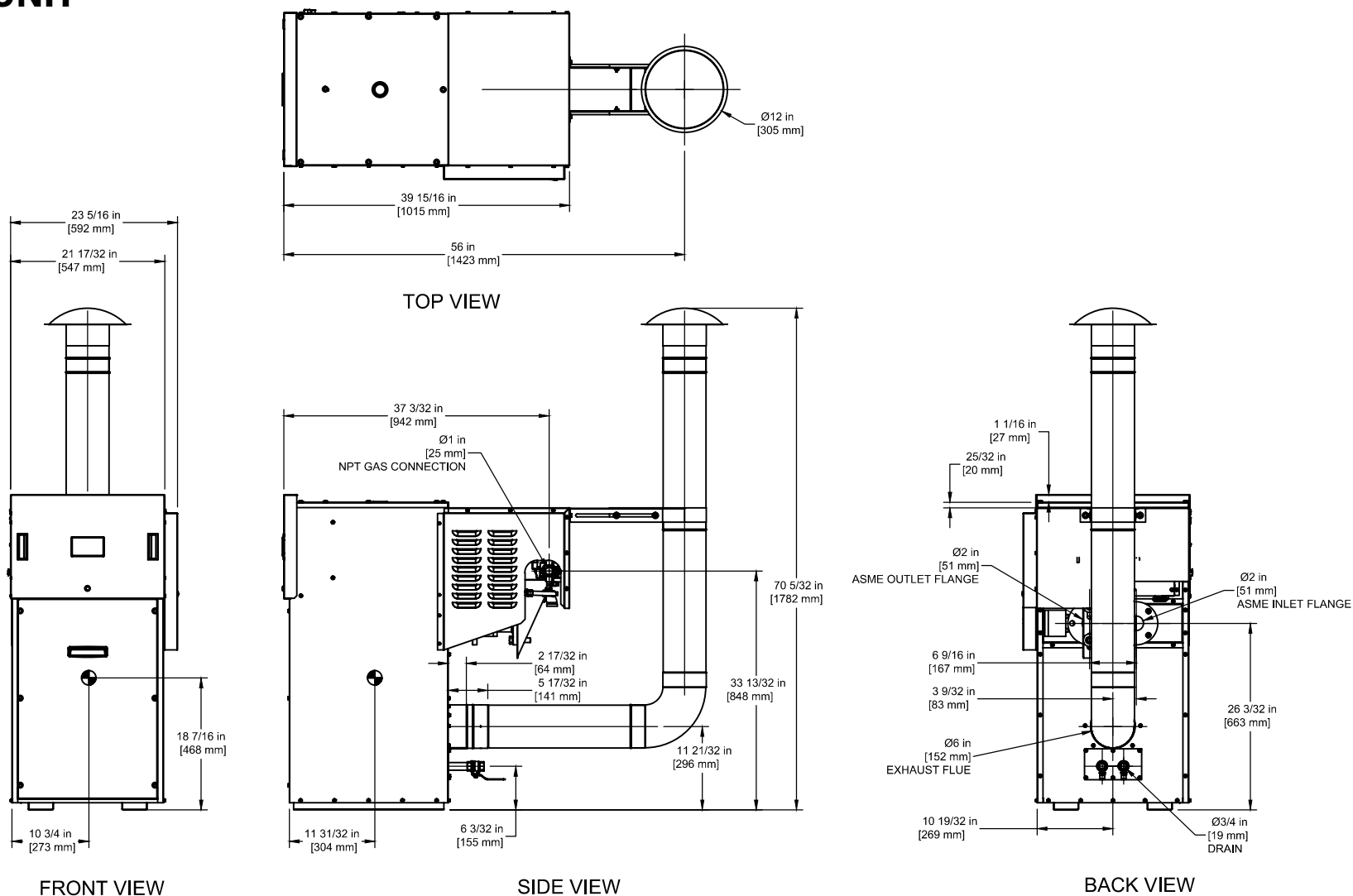
(see Installation and Operation Manual for venting information)

RBI® A Division of Mestek, Inc.
Westfield, MA 01085
(833) 265-5371

RELIABLE. BOLD. INNOVATIVE.

OUTDOOR UNIT

RSUB-151



Boilers & Water Heaters not available for sale in Canada due to NRCan regulations.

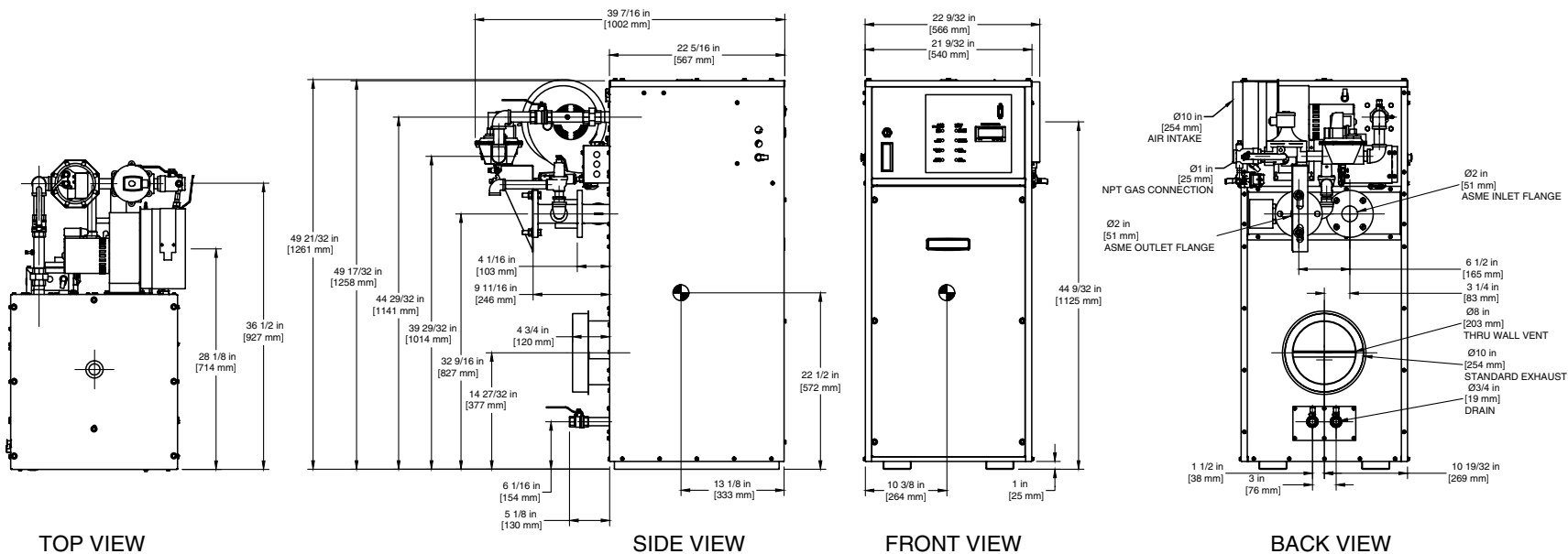
Notes:

1. Dimensions are approximate and should not be used to "rough-in" equipment.
2. Dimensions are subject to change without notice.

FUTERA II 500

INDOOR UNIT

RSUB-65 REV D



- Notes:**
- 1. Dimensions are approximate and should not be used to "rough-in" equipment.
 - 2. Dimensions are subject to change without notice.

BOILER CERTIFIED RATINGS & CAPACITIES

Fuel Type	Natural/Propane Gas	Boiler FLA	5.3*
Input BTU/hr.	750,000 / 220 kW	Min. Gas Pressure Required	5"W.C.**
Output BTU/hr.	637,500 / 187 kW	Max. Gas Pressure Allowed	14"W.C.
Electrical Requirements	120 VAC / 1 ph / 60 hz	Operating Weight	468 lbs. / 212 kg.

BOILER TEMPERATURE RISE / PRESSURE DROP

20°F / 11.1°C				25°F / 13.9°C				30°F / 16.7°C				35°F / 19.4°C			
Flow Rate		Pressure Drop		Flow Rate		Pressure Drop		Flow Rate		Pressure Drop		Flow Rate		Pressure Drop	
GPM	L/s	Ft	kPa	GPM	L/s	Ft	kPa	GPM	L/s	Ft	kPa	GPM	L/s	Ft	kPa
63.8	4.0	1.57	4.6	51.0	3.2	1.04	3.1	42.5	2.7	0.70	2.2	36.4	2.3	0.60	1.6

BOILER / WATER HEATER TRIM & CONTROLS

Main Gas Valve	V4944B	Main Ball Valve	1"
Firing Valve	1"	Pilot Regulator	White-Rodgers 25M
Safety Valve	ASCO L8214G 1"	Air Switch	HUBA
Ignition Control	Honeywell RM7897C	Blower Motor	Fasco 1/4 hp - FLA 3.6
Operating Control (FB/FW)	Jumo	Relief Valve - FB	3/4" x 3/4" set @ 50 psi
High Limit	Honeywell L4008E	Relief Valve - FW	3/4" x 3/4" set @ 125 psi
		Flow Switch	TACO

A.S.M.E.

ASME Sect IV Htg Surface	97.79 Sq. Ft. / 9.08 Sq. M.	Design Data	Max. 160 psig & 250°F
Water Volume	3.7 gal / 14.0 Liters		

- * Add circulator amps.
** For incoming gas pressures lower than 5" W.C. natural or 11" W.C. propane, consult factory.

WATER HEATER HOURLY RECOVERY CAPACITY (GPH & LPH)

40°F	22°C	60°F	33°C	80°F	44°C	100°F	56°C	120°F	67°C	140°F	78°C
1877	7096	1252	4731	939	3548	751	2838	626	2365	536	2027

Boilers & Water Heaters not available for sale in Canada due to NRCan regulations.

REP FIRM _____

SUBMITTED BY _____

JOB NAME _____

ARCHITECT _____

ENGINEER _____

CONTRACTOR _____

DATE _____

FUTERA II 750

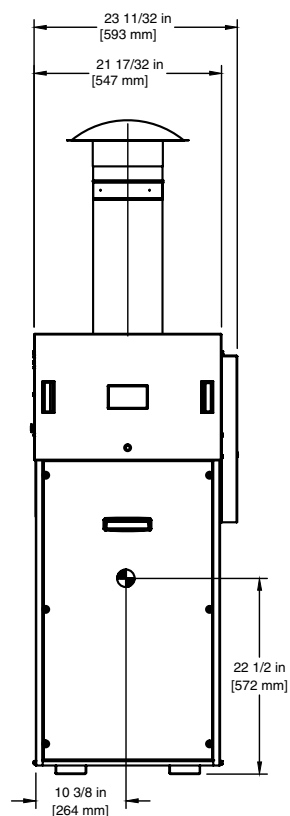
Category I or Category III Appliance
(see Installation and Operation Manual for venting information)

RBI® A Division of Mestek, Inc.
Westfield, MA 01085
(833) 265-5371

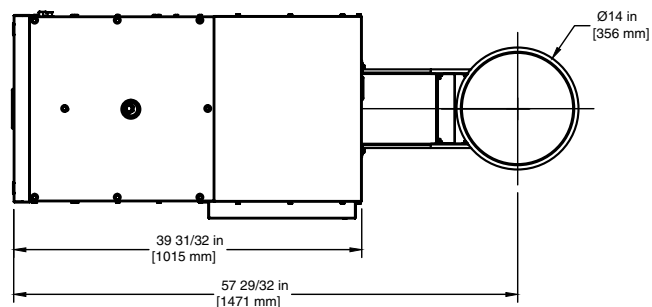
RELIABLE. BOLD. INNOVATIVE.

OUTDOOR UNIT

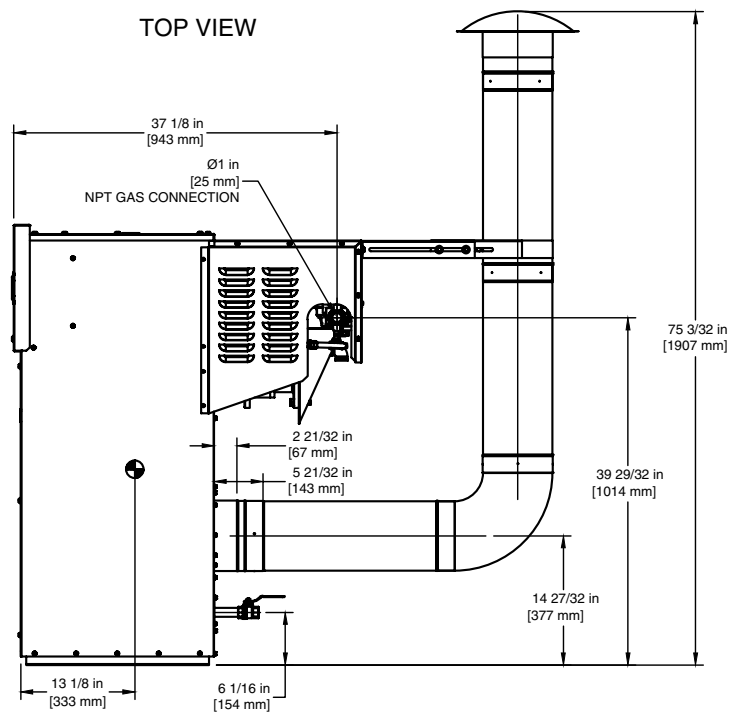
RSUB-152



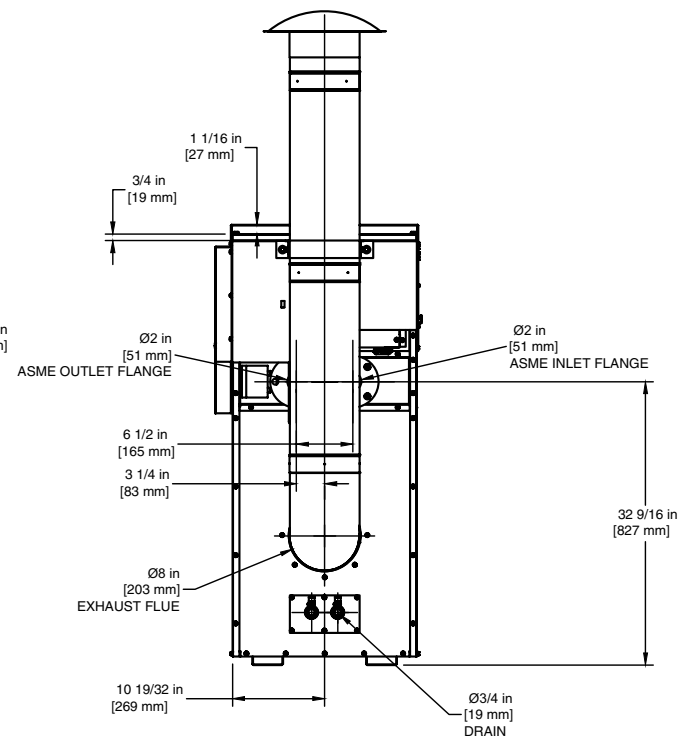
FRONT VIEW



TOP VIEW



SIDE VIEW



BACK VIEW

FUTERA II 750

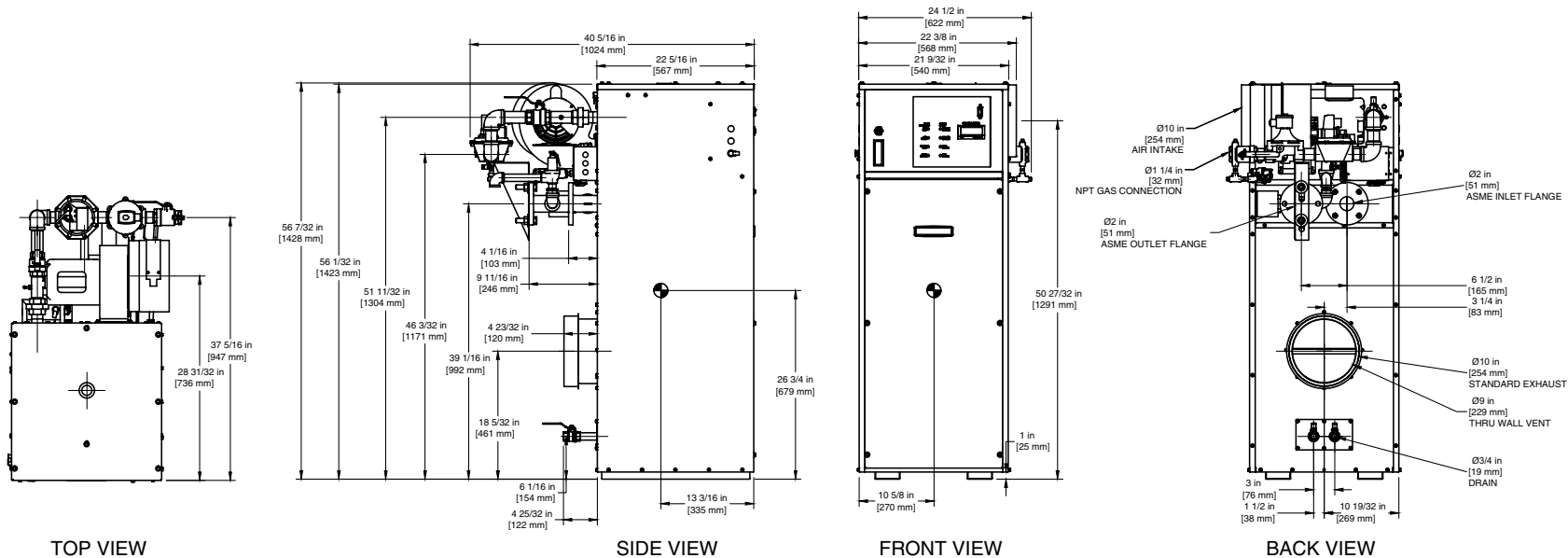
Boilers & Water Heaters not available for sale in Canada due to NRCan regulations.

Notes:

1. Dimensions are approximate and should not be used to "rough-in" equipment.
2. Dimensions are subject to change without notice.

INDOOR UNIT

RSUB-66 REV D



- Notes:
1. Dimensions are approximate and should not be used to "rough-in" equipment.
 2. Dimensions are subject to change without notice.

BOILER CERTIFIED RATINGS & CAPACITIES

Fuel Type	Natural/Propane Gas	Boiler FLA	5.3*
Input BTU/hr.	1,000,000 / 293 kW	Min. Gas Pressure Required	5"W.C.**
Output BTU/hr.	850,000 / 249 kW	Max. Gas Pressure Allowed	14"W.C.
Electrical Requirements	120 VAC / 1 ph / 60 hz	Operating Weight	578 lbs. / 262 kg.

BOILER TEMPERATURE RISE / PRESSURE DROP

20°F / 11.1°C				25°F / 13.9°C				30°F / 16.7°C				35°F / 19.4°C			
Flow Rate		Pressure Drop		Flow Rate		Pressure Drop		Flow Rate		Pressure Drop		Flow Rate		Pressure Drop	
GPM	L/s	Ft	kPa	GPM	L/s	Ft	kPa	GPM	L/s	Ft	kPa	GPM	L/s	Ft	kPa
85.0	5.4	3.44	10.1	68.0	4.3	2.27	6.7	56.7	3.6	1.60	4.8	48.6	3.1	1.20	3.6

BOILER / WATER HEATER TRIM & CONTROLS

Main Gas Valve	V4944B	Main Ball Valve	1 1/4"
Firing Valve	1 1/4"	Pilot Regulator	White-Rodgers 25M
Safety Valve	ASCO L8214G 1 1/4"	Air Switch	HUBA
Ignition Control	Honeywell RM 7897C	Blower Motor	Fasco 1/4 hp - FLA 3.
Operating Control (FB/FW)	Jumo	Relief Valve - FB	3/4" x 1" set @ 50 psi
High Limit	Honeywell L4008E	Relief Valve - FW	3/4" x 3/4" set @ 125 psi
		Flow Switch	TACO

A.S.M.E.

ASME Sect IV Htg Surface	126.07 Sq. Ft. / 11.71 Sq. M.	Design Data	Max. 160 psig & 250°F
Water Volume	4.0 gal / 15.2 Liters		

- * Add circulator amps.
** For incoming gas pressures lower than 5" W.C. natural or 11" W.C. propane, consult factory.

WATER HEATER HOURLY RECOVERY CAPACITY (GPH & LPH)

40°F	22°C	60°F	33°C	80°F	44°C	100°F	56°C	120°F	67°C	140°F	78°C
2500	9450	1667	6300	1250	4725	1000	3780	833	3150	714	2700

Boilers & Water Heaters not available for sale in Canada due to NRCan regulations.

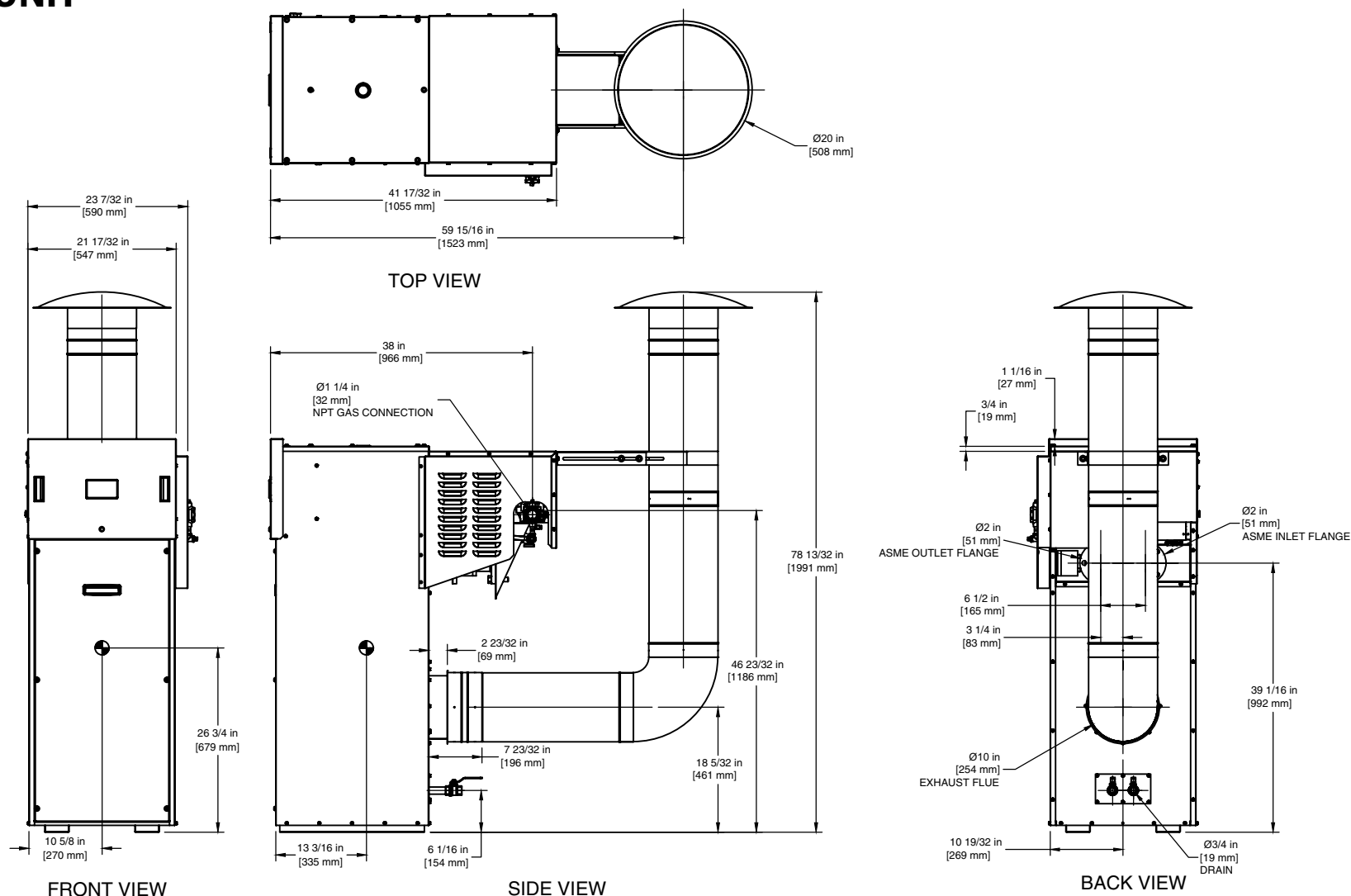
REP FIRM
 SUBMITTED BY
 JOB NAME
 ARCHITECT
 ENGINEER
 CONTRACTOR
 DATE

FUTERA II 1000
 Category I or Category III Appliance
 (see Installation and Operation Manual for venting information)

A Division of Mestek, Inc.
 Westfield, MA 01085
 (833) 265-5371

OUTDOOR UNIT

RSUB-153



FUTERA II 1000

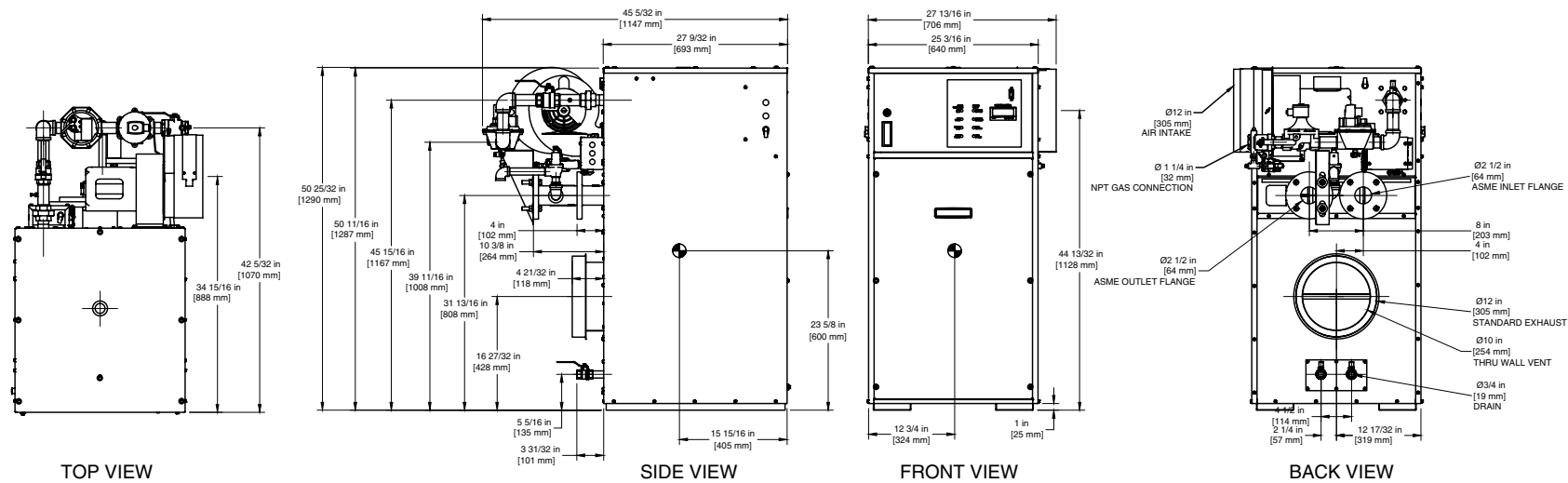
Boilers & Water Heaters not available for sale in Canada due to NRCAN regulations.

Notes:

1. Dimensions are approximate and should not be used to "rough-in" equipment.
2. Dimensions are subject to change without notice.

INDOOR UNIT

RSUB-67 REV D



- Notes:**
1. Dimensions are approximate and should not be used to "rough-in" equipment.
 2. Dimensions are subject to change without notice.

BOILER CERTIFIED RATINGS & CAPACITIES

Fuel Type	Natural/Propane Gas	Boiler FLA	9.9*
Input BTU/hr.	1,250,000 / 366 kW	Min. Gas Pressure Required	5"W.C.**
Output BTU/hr.	1,062,500 / 311 kW	Max. Gas Pressure Allowed	14"W.C.
Electrical Requirements	120 VAC / 1 ph / 60 hz	Operating Weight	673 lbs. / 306 kg.

BOILER TEMPERATURE RISE / PRESSURE DROP

20°F / 11.1°C				25°F / 13.9°C				30°F / 16.7°C				35°F / 19.4°C			
Flow Rate		Pressure Drop		Flow Rate		Pressure Drop		Flow Rate		Pressure Drop		Flow Rate		Pressure Drop	
GPM	L/s	Ft	kPa	GPM	L/s	Ft	kPa	GPM	L/s	Ft	kPa	GPM	L/s	Ft	kPa
106.3	6.7	2.11	6.2	85.0	5.4	1.40	4.1	70.8	4.5	1.00	2.9	60.7	3.8	0.70	2.2

BOILER / WATER HEATER TRIM & CONTROLS

Main Gas Valve	V4944B	Pilot Regulator	White-Rodgers 25M
Firing Valve	1 1/4"	Main Ball Valve	1 1/4"
Safety Valve	ASCO L8214G 1 1/4"	Air Switch	HUBA
Ignition Control	Honeywell RM7897C	Blower Motor	Fasco 1/2 hp - FLA 8.2
Operating Control (FB/FW)	Jumo	Relief Valve - FB	3/4" x 1" set @ 50 psi
High Limit	Honeywell L4008E	Relief Valve - FW	3/4" x 3/4" set @ 125 psi
		Flow Switch	TACO

A.S.M.E.

ASME Sect IV Htg Surface	133.76 Sq. Ft. / 12.43 Sq. M.	Design Data	Max. 160 psig & 250°F
Water Volume	4.7 gal / 17.8 Liters		

- * Add circulator amps.
** For incoming gas pressures lower than 5" W.C. natural or 11" W.C. propane, consult factory.

WATER HEATER HOURLY RECOVERY CAPACITY (GPH & LPH)

40°F	22°C	60°F	33°C	80°F	44°C	100°F	56°C	120°F	67°C	140°F	78°C
3121	11798	2081	7866	1561	5899	1248	4719	1040	3933	892	3371

Boilers & Water Heaters not available for sale in Canada due to NRCan regulations.

REP FIRM
 SUBMITTED BY
 JOB NAME
 ARCHITECT
 ENGINEER
 CONTRACTOR
 DATE

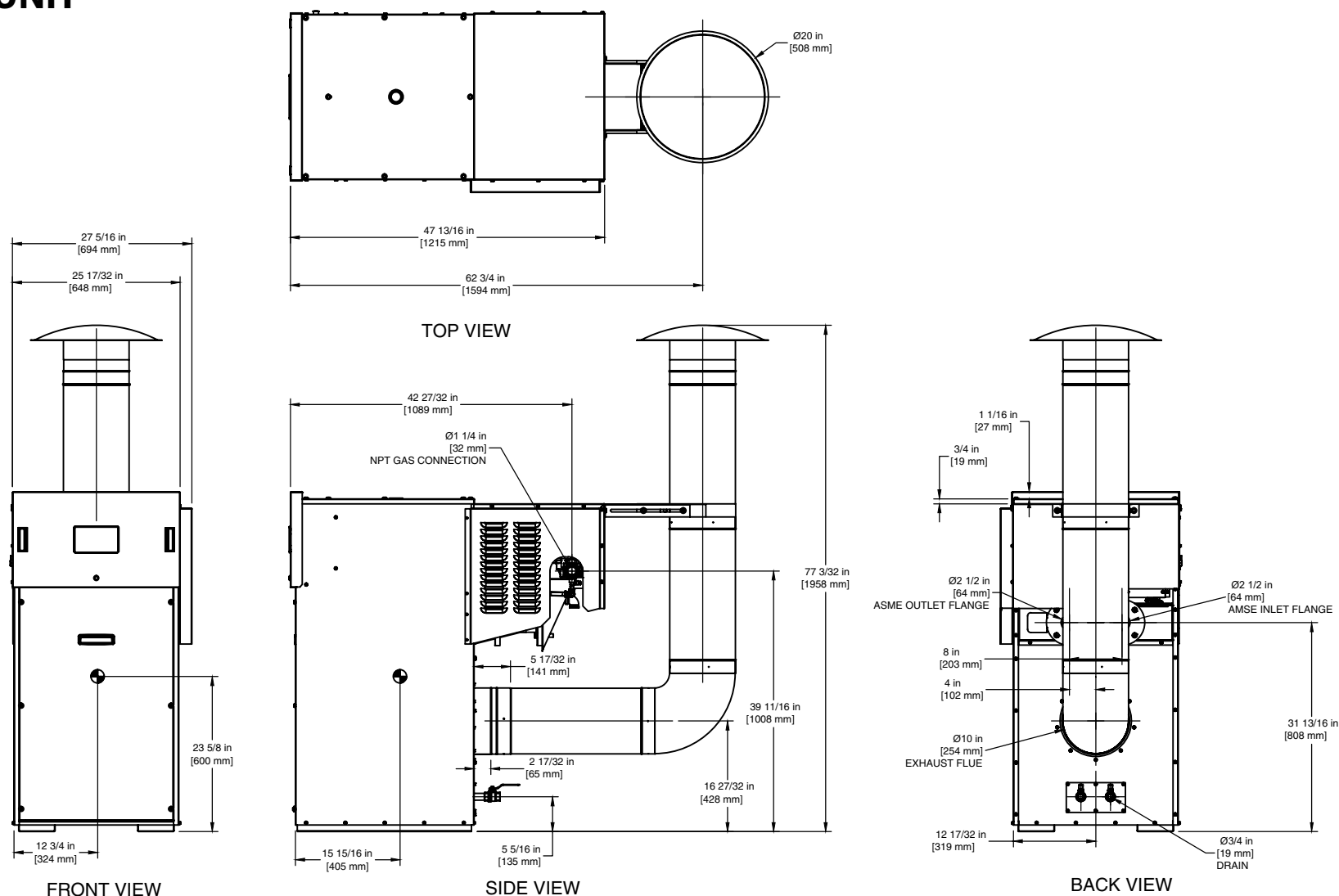
FUTERA II 1250
 Category I or Category III Appliance
 (see Installation and Operation Manual for venting information)

RBI®
 RELIABLE. BOLD. INNOVATIVE.

A Division of Mestek, Inc.
 Westfield, MA 01085
 (833) 265-5371

OUTDOOR UNIT

RSUB-154



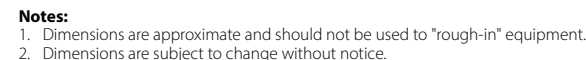
FUTERA II 1250

Boilers & Water Heaters not available for sale in Canada due to NRCan regulations.

Notes:

1. Dimensions are approximate and should not be used to "rough-in" equipment.
2. Dimensions are subject to change without notice.

RSUB-68 REV D



BOILER TEMPERATURE RISE / PRESSURE DROP

20°F / 11.1°C				25°F / 13.9°C				30°F / 16.7°C				35°F / 19.4°C			
Flow Rate		Pressure Drop		Flow Rate		Pressure Drop		Flow Rate		Pressure Drop		Flow Rate		Pressure Drop	
GPM	L/s	Ft	kPa	GPM	L/s	Ft	kPa	GPM	L/s	Ft	kPa	GPM	L/s	Ft	kPa
127.5	8.0	3.57	10.5	102.0	6.4	2.36	7.0	85.0	5.4	1.70	5.0	72.9	4.6	1.30	3.7

WATER HEATER HOURLY RECOVERY CAPACITY (GPH & LPH)

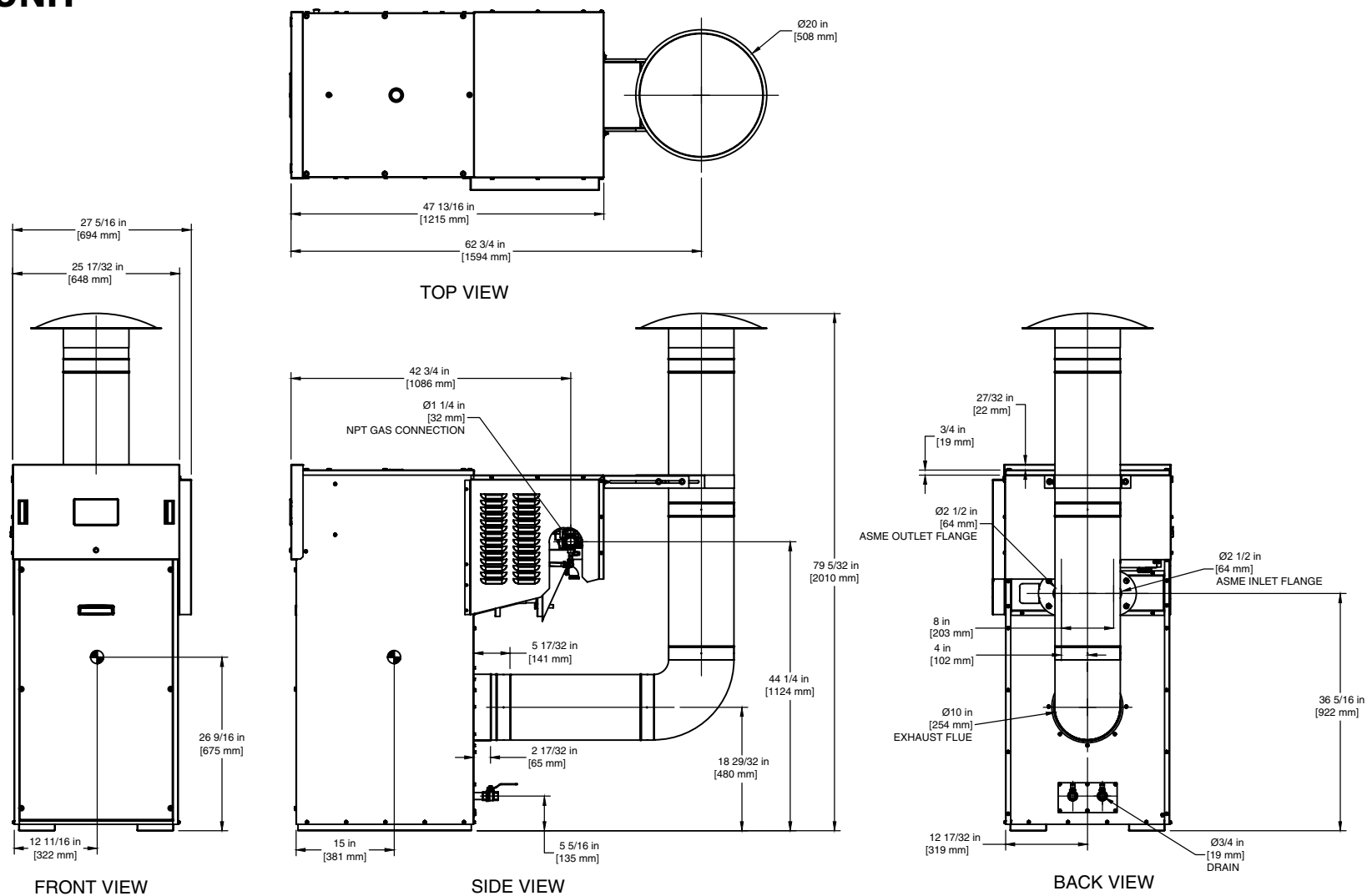
40°F	22°C	60°F	33°C	80°F	44°C	100°F	56°C	120°F	67°C	140°F	78°C
3741	14141	2494	9427	1870	7070	1496	5656	1247	4714	1069	4040

A.S.M.E.

REP FIRM	_____	<h1 style="margin: 0;">FUTERA II 1500</h1> <p style="margin: 0;">Category I or Category III Appliance (see Installation and Operation Manual for venting information)</p> <div style="display: flex; align-items: center; justify-content: center; margin-top: 20px;">  <div style="margin-left: 20px;"> <p>A Division of Mestek, Inc. Westfield, MA 01085 (833) 265-5371</p> </div> </div>
SUBMITTED BY	_____	
JOB NAME	_____	
ARCHITECT	_____	
ENGINEER	_____	
CONTRACTOR	_____	
DATE	_____	

OUTDOOR UNIT

RSUB-155



Boilers & Water Heaters not available for sale in Canada due to NRCan regulations.

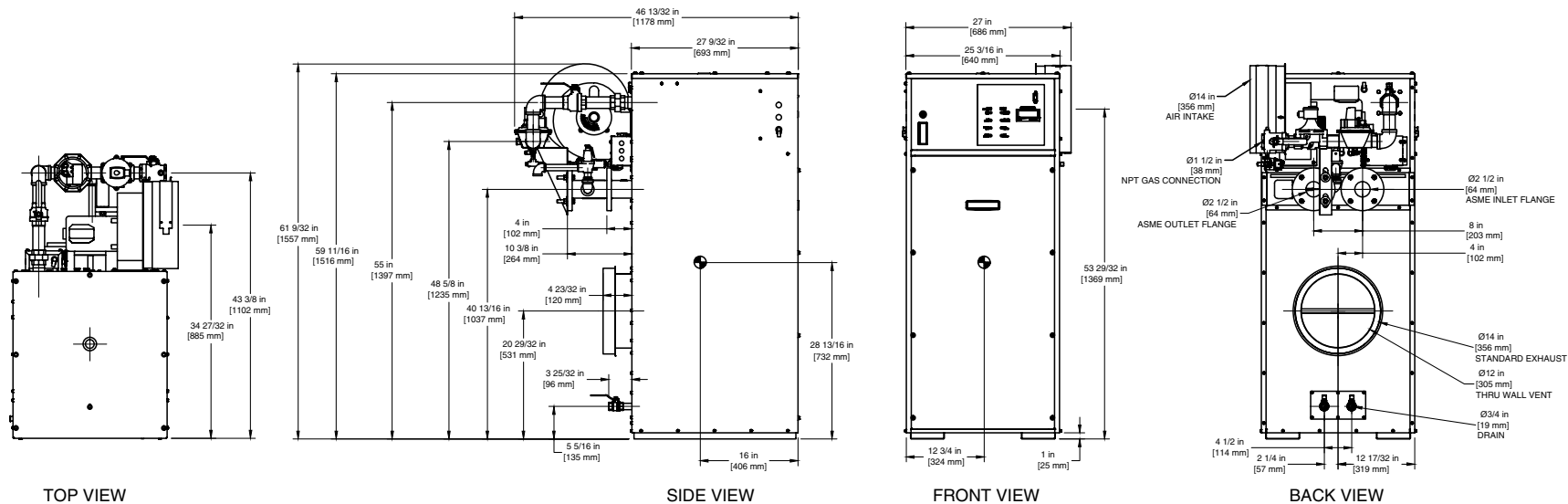
Notes:

1. Dimensions are approximate and should not be used to "rough-in" equipment.
2. Dimensions are subject to change without notice.

FUTERA II 1500

INDOOR UNIT

RSUB-69 REV D



- Notes:
- 1. Dimensions are approximate and should not be used to "rough-in" equipment.
 - 2. Dimensions are subject to change without notice.

BOILER CERTIFIED RATINGS & CAPACITIES

Fuel Type	Natural/Propane Gas	Boiler FLA	11.5*
Input BTU/hr.	1,750,000 / 513 kW	Min. Gas Pressure Required	5"W.C.**
Output BTU/hr.	1,487,500 / 436 kW	Max. Gas Pressure Allowed	14"W.C.
Electrical Requirements	120 VAC / 1 ph / 60 hz	Operating Weight	799 lbs. / 363 kg.

BOILER TEMPERATURE RISE / PRESSURE DROP

25°F / 13.9°C				30°F / 16.7°C				35°F / 19.4°C			
Flow Rate		Pressure Drop		Flow Rate		Pressure Drop		Flow Rate		Pressure Drop	
GPM	L/s	Ft	kPa	GPM	L/s	Ft	kPa	GPM	L/s	Ft	kPa
119.0	7.5	3.67	10.8	99.2	6.3	2.60	7.7	85.0	5.4	2.00	5.8

BOILER / WATER HEATER TRIM & CONTROLS

Main Gas Valve	V4944B	Main Ball Valve	1 1/2"
Firing Valve	1 1/2"	Pilot Regulator	White-Rodgers 25M
Safety Valve	ASCO L8214G 1 1/2"	Air Switch	HUBA
Ignition Control	Honeywell RM7897C	Blower Motor	Marathon 3/4 hp - FLA 9.8
Operating Control (FB/FW)	Jumo	Relief Valve - FB	1" x 1 1/4" set @ 50 psi
High Limit	Honeywell L4008E	Relief Valve - FW	3/4" x 3/4" set @ 125 psi
		Flow Switch	TACO

WATER HEATER HOURLY RECOVERY CAPACITY (GPH & LPH)

40°F	22°C	60°F	33°C	80°F	44°C	100°F	56°C	120°F	67°C	140°F	78°C
4359	16478	2906	10985	2180	8239	1744	6591	1453	5493	1245	4708

Boilers & Water Heaters not available for sale in Canada due to NRCan regulations.

A.S.M.E.

ASME Sect IV Htg Surface	188.57 Sq. Ft. / 17.52 Sq. M.	Design Data	Max. 160 psig & 250°F
Water Volume	5.3 gal / 20.1 Liters		

- * Add circulator amps.
- ** For incoming gas pressures lower than 5" W.C. natural or 11" W.C. propane, consult factory.

REP FIRM _____

SUBMITTED BY _____

JOB NAME _____

ARCHITECT _____

ENGINEER _____

CONTRACTOR _____

DATE _____

FUTERA II 1750

Category I or Category III Appliance

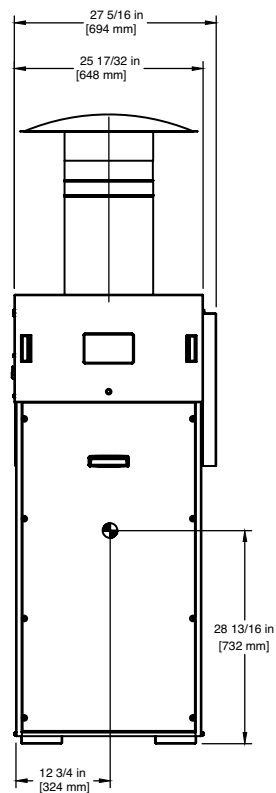
(see Installation and Operation Manual for venting information)

RBI® A Division of Mestek, Inc.
Westfield, MA 01085
(833) 265-5371

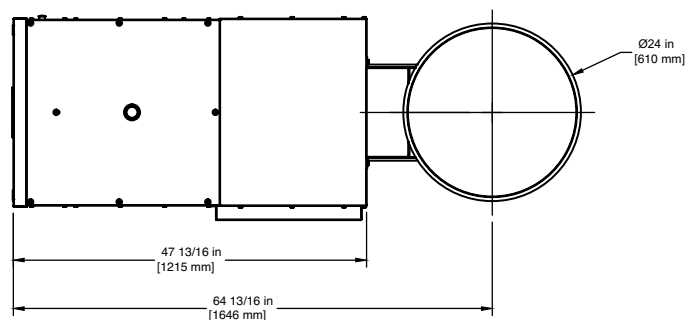
RELIABLE. BOLD. INNOVATIVE.

OUTDOOR UNIT

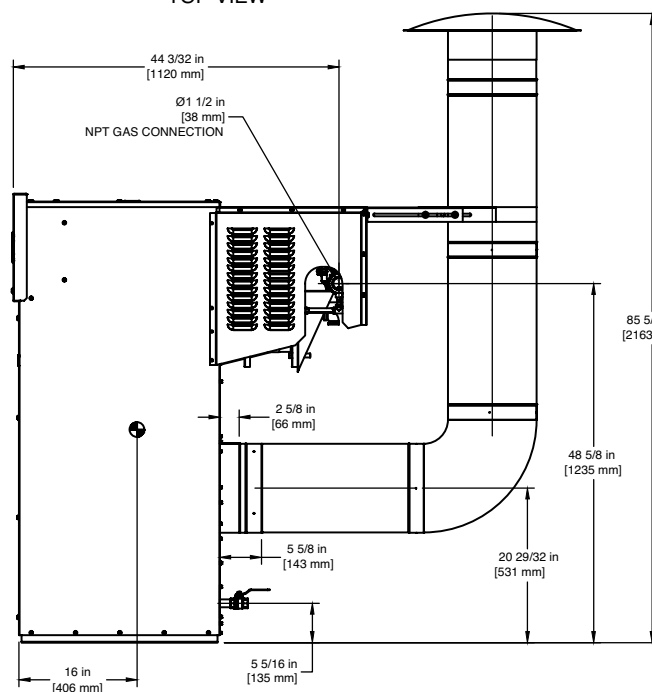
RSUB-156



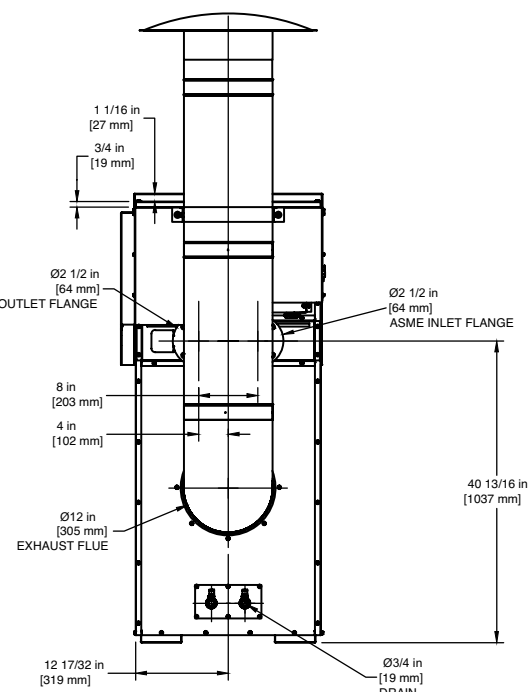
FRONT VIEW



TOP VIEW



SIDE VIEW



BACK VIEW

FUTERA II 1750

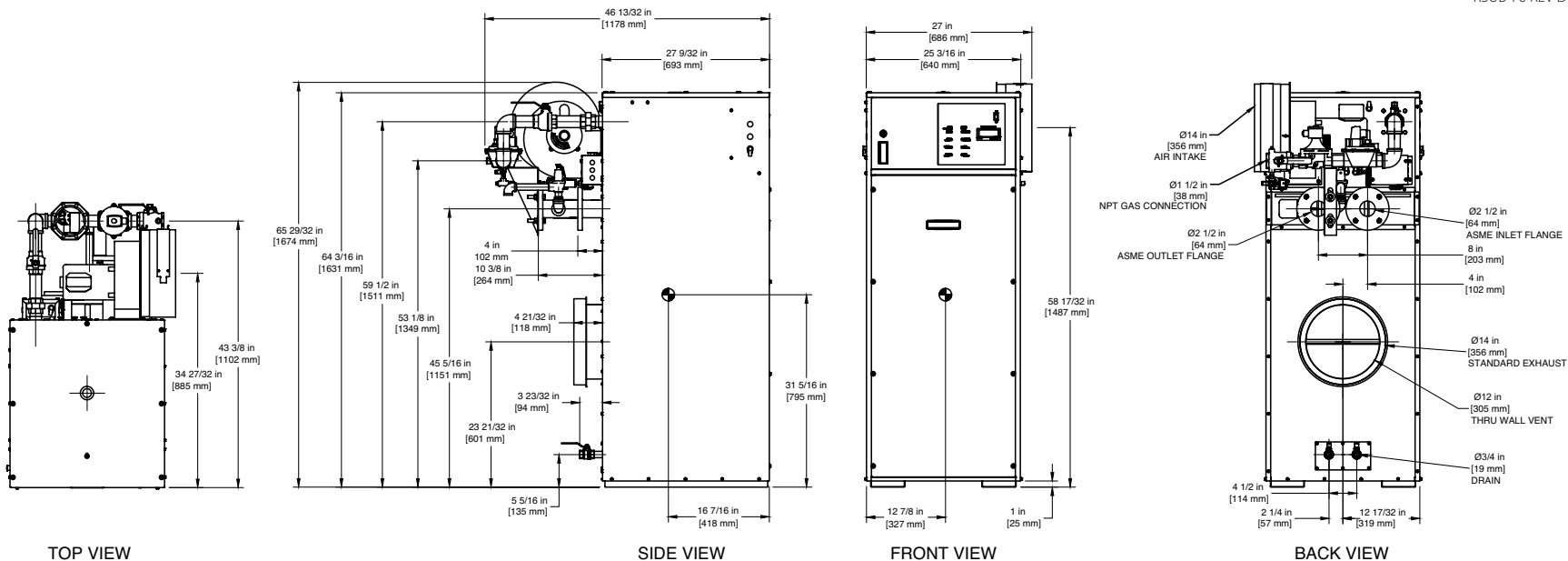
Boilers & Water Heaters not available for sale in Canada due to NRCan regulations.

Notes:

1. Dimensions are approximate and should not be used to "rough-in" equipment.
2. Dimensions are subject to change without notice.

INDOOR UNIT

RSUB-70 REV D



- Notes:
- 1. Dimensions are approximate and should not be used to "rough-in" equipment.
 - 2. Dimensions are subject to change without notice.

BOILER CERTIFIED RATINGS & CAPACITIES

Fuel Type	Natural/Propane Gas	Boiler FLA	11.5*
Input BTU/hr.	1,950,000 / 571 kW	Min. Gas Pressure Required	5"W.C.**
Output BTU/hr.	1,657,500 / 486 kW	Max. Gas Pressure Allowed	14"W.C.
Electrical Requirements	120 VAC / 1 ph / 60 hz	Operating Weight	863 lbs. / 392 kg.

BOILER TEMPERATURE RISE / PRESSURE DROP

25°F / 13.9°C				30°F / 16.7°C				35°F / 19.4°C			
Flow Rate		Pressure Drop		Flow Rate		Pressure Drop		Flow Rate		Pressure Drop	
GPM	L/s	Ft	kPa	GPM	L/s	Ft	kPa	GPM	L/s	Ft	kPa
132.6	8.4	5.14	15.1	110.5	7.0	3.70	10.8	94.7	6.0	2.80	8.1

BOILER / WATER HEATER TRIM & CONTROLS

Main Gas Valve	V4944B	Main Ball Valve	1 1/2"
Firing Valve	1 1/2"	Pilot Regulator	White-Rodgers 25M
Safety Valve	ASCO L8214G 1 1/2"	Air Switch	HUBA
Ignition Control	Honeywell RM7897C	Blower Motor	Marathon 3/4 hp - FLA 9.8
Operating Control (FB/FW)	Jumo	Relief Valve - FB	1" x 1 1/4" set @ 50 psi
High Limit	Honeywell L4008E	Relief Valve - FW	3/4" x 3/4" set @ 125 psi
		Flow Switch	TACO

WATER HEATER HOURLY RECOVERY CAPACITY (GPH & LPH)

40°F	22°C	60°F	33°C	80°F	44°C	100°F	56°C	120°F	67°C	140°F	78°C
4976	18809	3317	12539	2488	9405	1990	7524	1659	6270	1422	5374

Boilers & Water Heaters not available for sale in Canada due to NRCan regulations.

A.S.M.E.

ASME Sect IV Htg Surface	215.98 Sq. Ft. / 20.06 Sq. M.	Design Data	Max. 160 psig & 250°F
Water Volume	5.7 gal / 21.6 Liters		

- * Add circulator amps.
- ** For incoming gas pressures lower than 5" W.C. natural or 11" W.C. propane, consult factory.

REP FIRM _____

SUBMITTED BY _____

JOB NAME _____

ARCHITECT _____

ENGINEER _____

CONTRACTOR _____

DATE _____

FUTERA II 1950

Category I or Category III Appliance

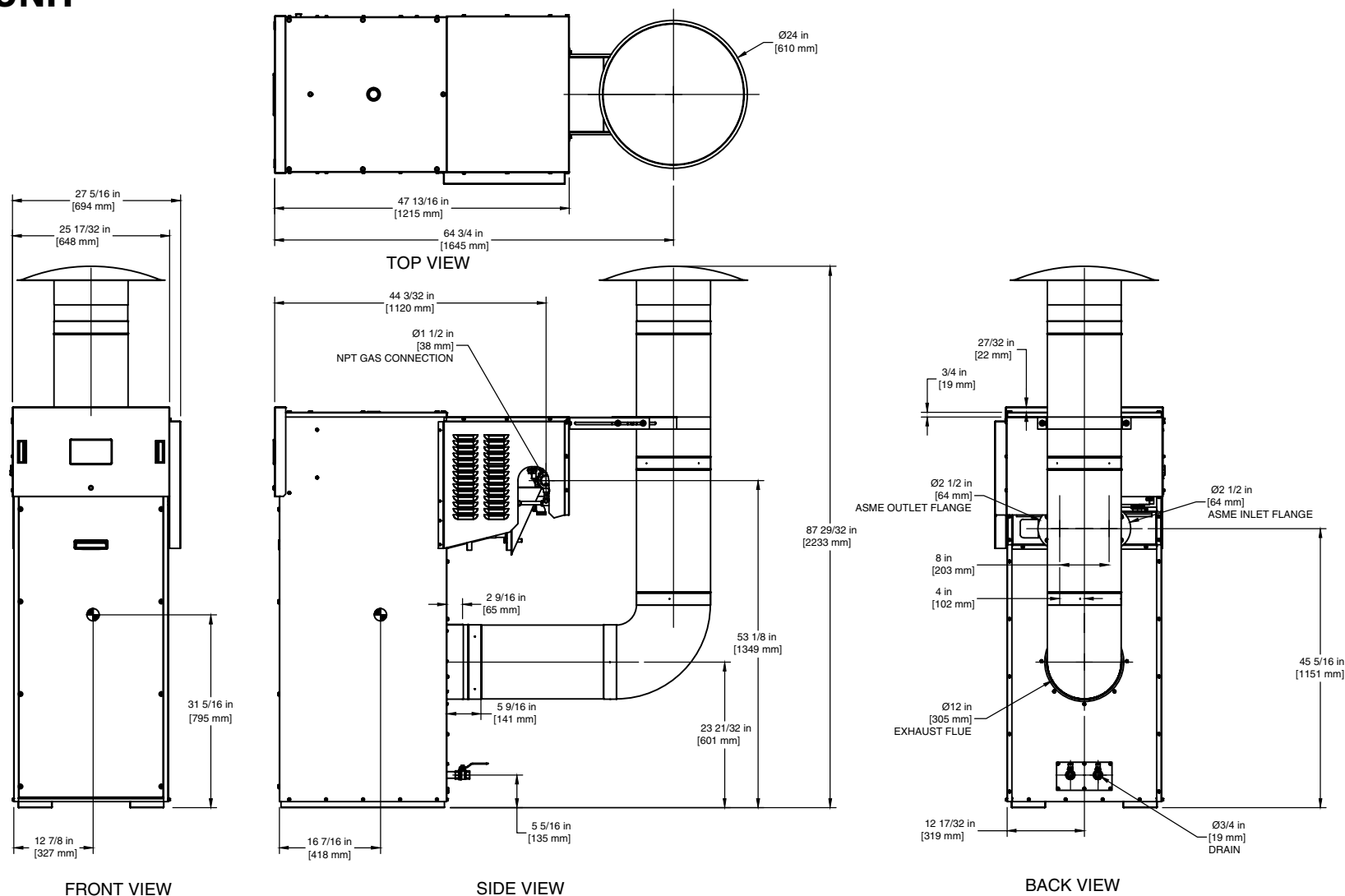
(see Installation and Operation Manual for venting information)

RBI® A Division of Mestek, Inc.
Westfield, MA 01085
(833) 265-5371

RELIABLE. BOLD. INNOVATIVE.

OUTDOOR UNIT

RSUB-157



Boilers & Water Heaters not available for sale in Canada due to NRCan regulations.

Notes:

1. Dimensions are approximate and should not be used to "rough-in" equipment.
2. Dimensions are subject to change without notice.

FUTERA II 1950